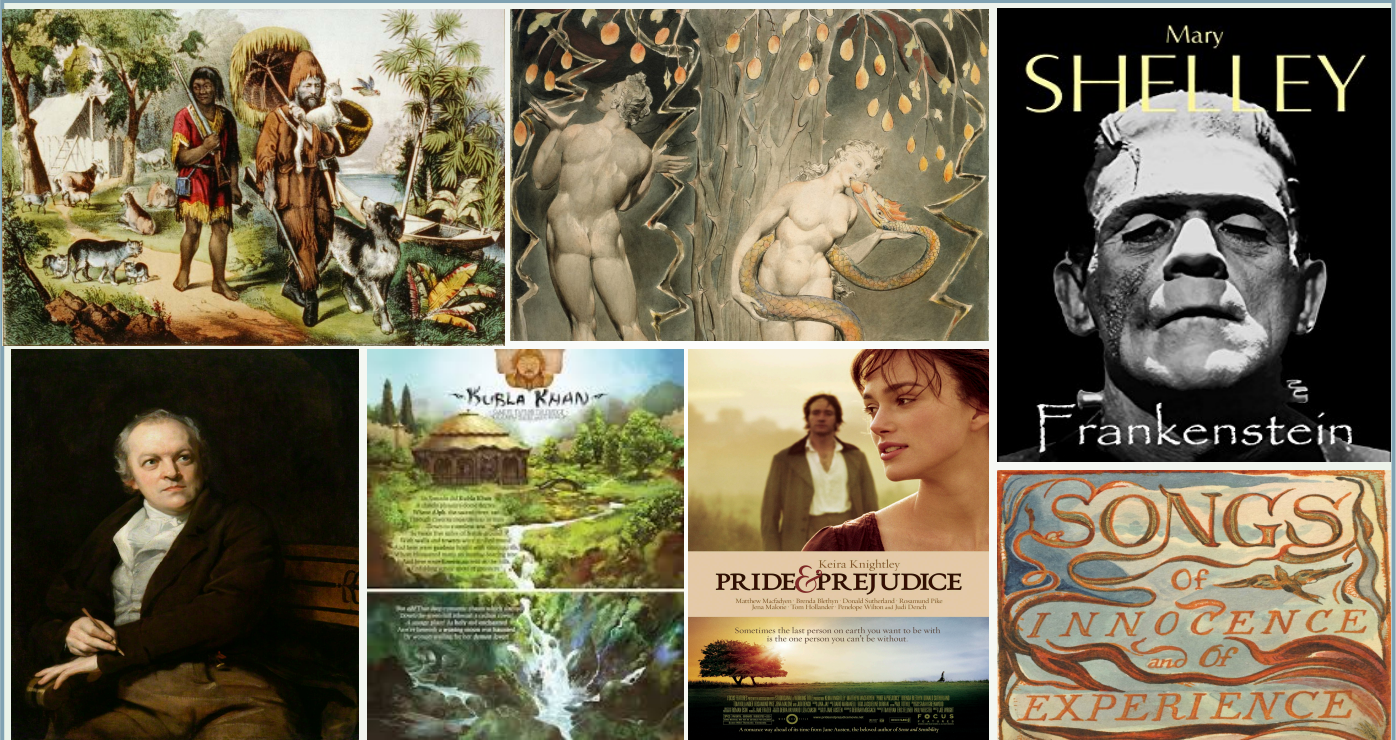


DEPARTMENT OF ENGLISH  
SHIBPUR DINO BUNDHOO INSTITUTION (COLLEGE)  
PRESENTS

# STUDENTS' SEMINAR

SATURDAY, 27 JUNE 2020 3 PM



## KEY TOPICS

- TREATMENT OF CHILDHOOD IN BLAKE'S "SONGS"
- PASTORAL ELEGY: A COMPARATIVE STUDY OF GRAY'S "ELEGY" AND MILTON'S *LYCIDAS*
- *FRANKENSTEIN* AS A GOTHIC NOVEL
- REWORKING OF THE PARADISE LOST THEME IN *FRANKENSTEIN* AND "GOBLIN MARKET"
- IMAGINARY GEOGRAPHY: THE ORIENT IN "KUBLA KHAN"
- *ROBINSON CRUSOE* AND 18<sup>TH</sup> CENTURY VOYAGE NARRATIVES
- INSTRUCTIVE ELEMENTS IN WORDSWORTH'S "TINTERN ABBEY"
- AUSTEN'S PLEA FOR GOOD SENSE IN *PRIDE AND PREJUDICE*

Please log in to the following link to register:

[https://docs.google.com/forms/d/e/1FAIpQLSfpAEr49amVNM-UDmVJjo7Xol1bgWb69bdi5k\\_FCd4jPX7sFA/viewform?usp=sf\\_link](https://docs.google.com/forms/d/e/1FAIpQLSfpAEr49amVNM-UDmVJjo7Xol1bgWb69bdi5k_FCd4jPX7sFA/viewform?usp=sf_link)